

# DAYTON

## SPECIFICATIONS

### Dayton® Double Bowl Sink Models DDEMR23322 and DDEMR23322R

#### GENERAL

Sink bowls are formed of #22 gauge, nickel bearing stainless steel. Self-rimming.

#### DESIGN FEATURES

Bowl Depth: 7" (large bowl), 5-1/8" (disposer bowl).

Coved Corners: 3" vertical and 2-1/4" horizontal (large bowl), 1-3/4" horizontal (small bowl).

Finish: Exposed surfaces are polished to a satin finish with highshine bowl radius.

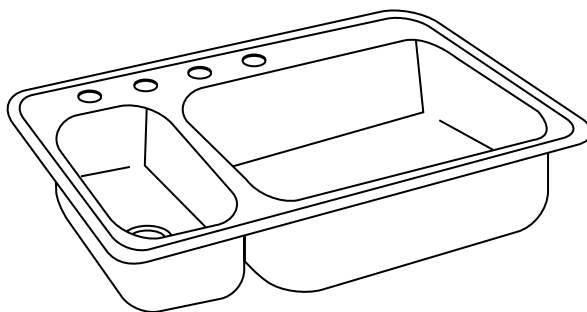
Underside: Fully undercoated to prevent condensation and deaden sound.

#### OTHER

Drain opening: 3-1/2".

NOTE: Unless otherwise specified, sink is furnished with 4 faucet holes as shown.

These sinks do **NOT** comply with ASME A112.19.3-2000.

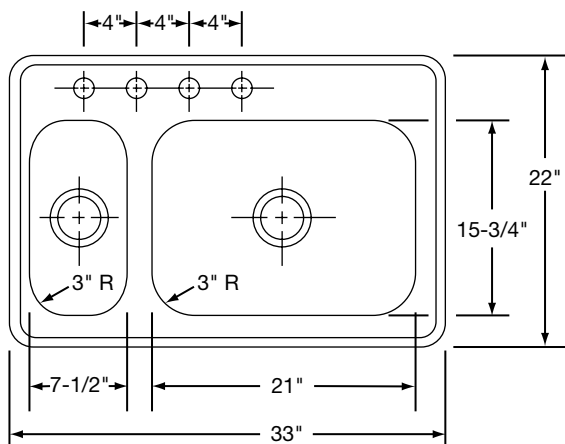


Model DDEMR233224

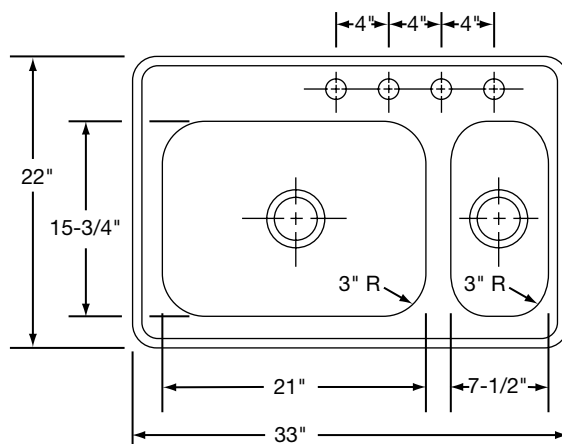
#### SINK DIMENSIONS (INCHES)\*

Model Number	Overall		Inside Left Bowl			Inside Right Bowl			Cutout in Countertop (1 1/2" Radius Corners)		No. of 1 1/2" Dia. Faucet Holes 4" Centers	Minimum Cabinet Size
	L	W	L	W	D	L	W	D	L	W		
DDEMR23322	33	22	7 1/2	15 3/4	5 1/8	21	15 3/4	7	32 3/8	21 3/8	3 or 4	36
DDEMR23322R	33	22	21	15 3/4	7	7 1/2	15 3/4	5 1/8	32 3/8	21 3/8	3 or 4	36

\*Length is left to right. Width is front to back.

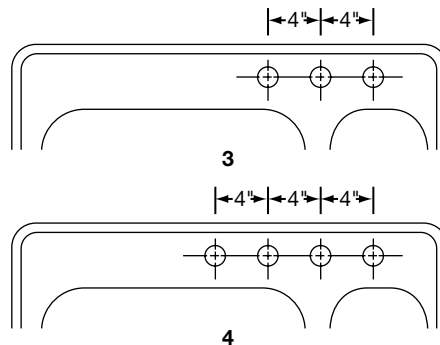
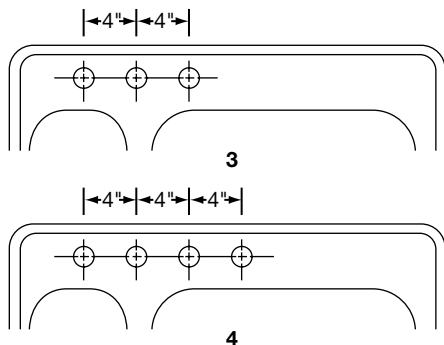


Model DDEMR233224 Illustrated



Model DDEMR23322R4 Illustrated

#### HOLE DRILLING CONFIGURATIONS



ALL DIMENSIONS IN INCHES, TO CONVERT TO MILLIMETERS MULTIPLY BY 25.4.

In keeping with our policy of continuing product improvement, Elkay reserves the right to change product specifications without notice.

This specification describes an Elkay product with design, quality and functional benefits to the user. When making a comparison of other producers' offerings, be certain these features are not overlooked.